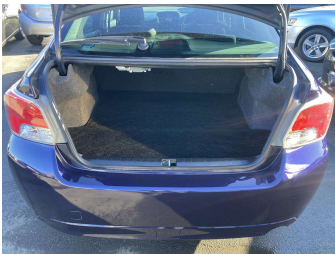


2012 Subaru Impreza G4 2.0I EYESIGHT 4WD



Purchase Price

\$11,995

Includes GST
Excludes on-road costs of \$395

Finance may be available on this vehicle. Ask one of our friendly staff for more information.



Gain peace of mind with Mechanical Breakdown Insurance. **Ask us how.**



Top features

- » 5 Seater
- » Air Con
- » Air Conditioning
- » Alloys
- » Auto Lights
- » Car Stereo
- » CD Player
- » Central Locking
- » Central Locking
- » Child seat anchor poin...
- » Climate Control
- » Digital Display
- » Electric Mirrors
- » ESC
- » Paddle Shift
- » Radio
- » Rear Wiper
- » Remote Locking

Body Style

4 door, Sedan

Odometer

63,402 km

Engine

2000 cc

Fuel Type

Petrol

Transmission

CVT Auto, 4WD

Wheels

-

VIN

7AT0GF09X25003917

Interior

Black

Safety



Based on 2024 UCSR rating for 12-16 models

Reg No.

-

Ext Colour

Blue

History

-

Seats

5 seats

CO2 Emissions

★★★★★☆☆

163 grams/km

Energy Economy

★★★☆☆☆☆

**Annual fuel cost of \$2,740
7L per 100km**

Cost per year is an estimate based on petrol price of \$2.80 per litre and an average distance of 14000 km. Emissions and Energy Economy figures standardised to 3P WLTP.

Stock ID: 4078



Mitchell Motor Court | Phone 03 453 0011 | Email mitchellmc@xtra.co.nz
299 Kaikorai Valley Road, Dunedin 9011, New Zealand
www.mitchellmotorcourt.co.nz