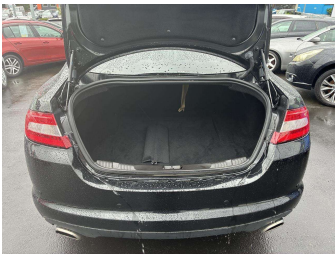


2010 Jaguar XF 3.0L



Purchase Price

Includes GST, Registration & Licensing

\$7,995

Finance may be available on this vehicle. Ask one of our friendly staff for more information.



Gain peace of mind with Mechanical Breakdown Insurance. **Ask us how.**



ASSURANT®

Top features

- » 5 Seater
- » ABS Braking
- » Air Bag(s)
- » Air Con
- » Air Conditioning
- » Alloys
- » Car Stereo
- » Central Locking
- » Climate Control
- » Digital Display
- » EFI
- » Electric Mirrors
- » Electric Mirrors
- » Electric Windows
- » Keyless Start
- » Power Steering
- » Remote Locking

Body Style

4 door, Sedan

Odometer

96,084 km

Engine

3000 cc, V6

Fuel Type

Petrol

Transmission

Automatic, Rear Wheel

Wheels

-

VIN

SAJKC05H6AFR72989

Interior

Brown

Safety



Based on 2025 VSRR rating

Reg No.

KPK192

Ext Colour

Black

History

-

Seats

5 seats

CO2 Emissions

☆☆☆☆☆☆

325 grams/km

Energy Economy

☆☆☆☆☆☆

Annual fuel cost of \$5,450

13.9L per 100km

Cost per year is an estimate based on petrol price of \$2.80 per litre and an average distance of 14000 km. Emissions and Energy Economy figures standardised to 3P WLTP.

Stock ID: 4512



Mitchell Motor Court | Phone 03 453 0011 | Email mitchellmc@xtra.co.nz
299 Kaikorai Valley Road, Dunedin 9011, New Zealand
www.mitchellmotorcourt.co.nz