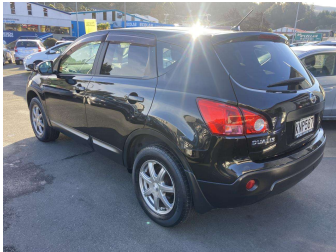
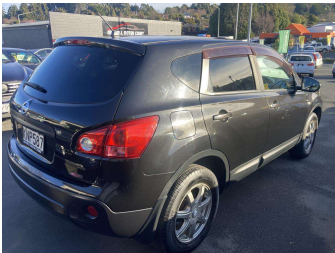


# 2008 Nissan Dualis 20G



Purchase Price

**\$6,995**

Includes GST, Registration & Licensing

Finance may be available on this vehicle. Ask one of our friendly staff for more information.



Gain peace of mind with Mechanical Breakdown Insurance. **Ask us how.**



### Top features

- » 5 Seater
- » ABS Braking
- » Air Bag(s)
- » Air Con
- » Air Conditioning
- » Alloys
- » Car Stereo
- » Central Locking
- » Central Locking
- » Child seat anchor poin...
- » EFI
- » Electric Mirrors
- » Electric Mirrors
- » Electric Windows
- » Power Steering
- » Rear Wiper
- » Stereo

Body Style

**4 door, SUV**

Odometer

**183,729 km**

Engine

**2000 cc**

Fuel Type

**Petrol**

Transmission

**CVT Auto, Front Wheel**

Wheels

-

VIN

**7AT0DH7HX17000337**

Interior

**Black**

Safety



Based on 2024 UCSR rating for 07-13 models

Reg No.

**KNP587**

Ext Colour

**Black**

History

-

Seats

**5 seats**

CO2 Emissions

★★★★☆☆

**197 grams/km**

Energy Economy

★★★★☆☆

**Annual fuel cost of \$3,210**

**8.2L per 100km**

Cost per year is an estimate based on petrol price of \$2.80 per litre and an average distance of 14000 km. Emissions and Energy Economy figures standardised to 3P WLTP.

**Stock ID: 4173**



Mitchell Motor Court | Phone 03 453 0011 | Email [mitchellmc@xtra.co.nz](mailto:mitchellmc@xtra.co.nz)  
299 Kaikorai Valley Road, Dunedin 9011, New Zealand  
[www.mitchellmotorcourt.co.nz](http://www.mitchellmotorcourt.co.nz)