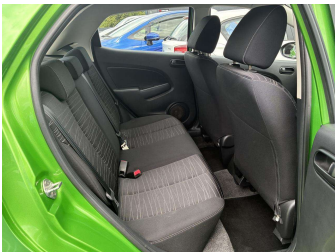
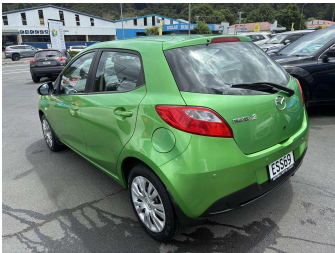


# 2008 Mazda 2 NZ New 1.5L



### Purchase Price

Includes GST, Registration & Licensing

**\$6,995**

Finance may be available on this vehicle. Ask one of our friendly staff for more information.



Gain peace of mind with Mechanical Breakdown Insurance. **Ask us how.**



ASSURANT®

### Top features

- » 5 Seater
- » Air Bag(s)
- » Air Con
- » Air Conditioning
- » Central Locking
- » Central Locking
- » Digital Display
- » EFI
- » Electric Mirrors
- » Electric Windows
- » Paddle Shift
- » Rear Wiper
- » Remote Locking
- » Stereo
- » Wheel Covers

Body Style

**4 door, Hatchback**

Odometer

**102,575 km**

Engine

**1500 cc**

Fuel Type

**Petrol**

Transmission

**Automatic, Front Wheel**

Wheels

-

VIN

**JM0DE10Y190124980**

Interior

**Black**

Safety



Based on 2025 UCSR rating for 07-14 models

Reg No.

**ESS69**

Ext Colour

**Green**

History

-

Seats

**5 seats**

CO2 Emissions

★★★★☆

**181 grams/km**

Energy Economy

★★☆☆☆☆

**Annual fuel cost of \$2,980  
7.6L per 100km**

Cost per year is an estimate based on petrol price of \$2.80 per litre and an average distance of 14000 km. Emissions and Energy Economy figures standardised to 3P WLTP.

**Stock ID: 4523**



Mitchell Motor Court | Phone 03 453 0011 | Email [mitchellmc@xtra.co.nz](mailto:mitchellmc@xtra.co.nz)  
299 Kaikorai Valley Road, Dunedin 9011, New Zealand  
[www.mitchellmotorcourt.co.nz](http://www.mitchellmotorcourt.co.nz)