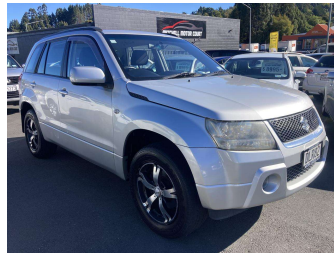


2006 Suzuki Grand Vitara WJLXA 2.0 5DR



Purchase Price **\$9,995**
Includes GST, Registration & Licensing

Finance may be available on this vehicle. Ask one of our friendly staff for more information.



Gain peace of mind with Mechanical Breakdown Insurance. **Ask us how.**



Top features

- » 5 Seater
- » Air Bag(s)
- » Air Con
- » Air Conditioning
- » Alloys
- » Central Locking
- » Central Locking
- » Child seat anchor poin...
- » EFI
- » Electric Mirrors
- » Electric Mirrors
- » Electric Windows
- » Power Steering
- » Remote Locking
- » Spare Wheel Cover
- » Stereo
- » Tow Bar
- » Towbar

Body Style
4 door, SUV / 4x4

Odometer
161,389 km

Engine
2000 cc

Fuel Type
Petrol

Transmission
Automatic, 4WD

Wheels
-

VIN
JSAJTD54V00117320

Interior
Black

Safety



Based on 2023 UCSR rating for 05-08 models

Reg No.
DLR82

Ext Colour
Silver

History
-

Seats
5 seats

CO2 Emissions
★ ★ ☆ ☆ ☆ ☆
243 grams/km

Energy Economy
★ ☆ ☆ ☆ ☆ ☆

Annual fuel cost of \$3,960
10.1L per 100km

Cost per year is an estimate based on petrol price of \$2.80 per litre and an average distance of 14000 km. Emissions and Energy Economy figures standardised to 3P WLTP.

Stock ID: 3603



Mitchell Motor Court | Phone 03 453 0011 | Email mitchellmc@xtra.co.nz
299 Kaikorai Valley Road, Dunedin 9011, New Zealand
www.mitchellmotorcourt.co.nz