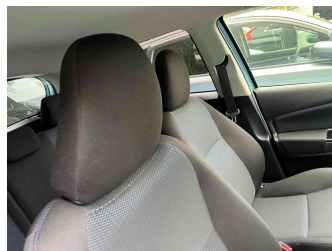
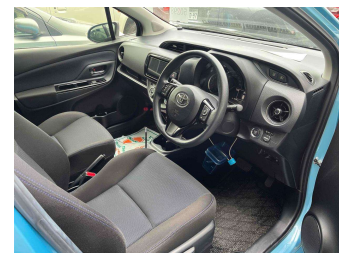


2016 Toyota Vitz 5D 1.3F LED EDITION



Purchase Price
Includes GST, Registration & Licensing

POA

Finance may be available on this vehicle. Ask one of our friendly staff for more information.



Gain peace of mind with Mechanical Breakdown Insurance. **Ask us how.**



Top features

None Listed

Body Style
-

Odometer
40,000 km

Engine
1300 cc

Fuel Type
Petrol

Transmission
CVT Auto

Wheels
-

VIN
-

Interior
-

Safety
-

Reg No.
-

Ext Colour
Blue

History
-

Seats
-

CO2 Emissions
-

Energy Economy
-

Stock ID: 4768



Mitchell Motor Court | Phone 03 453 0011 | Email mitchellmc@xtra.co.nz
299 Kaikorai Valley Road, Dunedin 9011, New Zealand
www.mitchellmotorcourt.co.nz