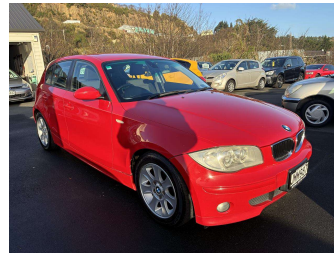


2006 BMW 118i



Purchase Price

\$6,995

Includes GST, Registration & Licensing

Finance may be available on this vehicle. Ask one of our friendly staff for more information.



Gain peace of mind with Mechanical Breakdown Insurance. **Ask us how.**



Top features

- » 5 Seater
- » ABS Braking
- » Air Bag(s)
- » Air Con
- » Air Conditioning
- » Alloys
- » Central Locking
- » Central Locking
- » Child seat anchor poin...
- » EFI
- » Electric Mirrors
- » Electric Windows
- » Power Steering
- » Rear Wiper
- » Stereo

Body Style

4 door, Hatchback

Odometer

132,032 km

Engine

2000 cc

Fuel Type

Petrol

Transmission

Automatic

Wheels

-

VIN

WBAUF32030PR75269

Interior

Black

Safety



Based on 2025 UCSR rating for 04-13 models

Reg No.

JMM987

Ext Colour

Red

History

-

Seats

5 seats

CO2 Emissions

★★★★☆☆

224 grams/km

Energy Economy

★★★★☆☆

**Annual fuel cost of \$3,650
9.3L per 100km**

Cost per year is an estimate based on petrol price of \$2.80 per litre and an average distance of 14000 km. Emissions and Energy Economy figures standardised to 3P WLTP.

Stock ID: 4751



Mitchell Motor Court | Phone 03 453 0011 | Email mitchellmc@xtra.co.nz
299 Kaikorai Valley Road, Dunedin 9011, New Zealand
www.mitchellmotorcourt.co.nz