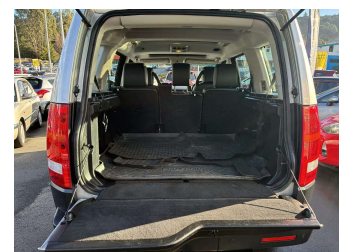
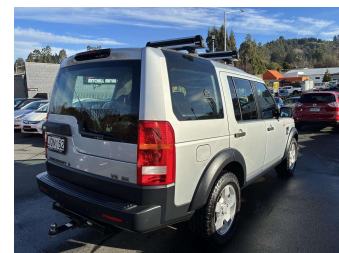


# 2006 Land Rover Discovery V6 SE



**Purchase Price** **\$9,995**  
Includes GST, Registration & Licensing

Finance may be available on this vehicle. Ask one of our friendly staff for more information.



Gain peace of mind with Mechanical Breakdown Insurance. **Ask us how.**



**Top features**

- » 7 Seater
- » ABS Braking
- » Air Bag(s)
- » Air Con
- » Air Conditioning
- » Alloys
- » Car Stereo
- » Central Locking
- » Child seat anchor poin...
- » Climate Control
- » EFI
- » Electric Mirrors
- » Electric Windows
- » Power Steering
- » Rear Wiper
- » Remote Locking
- » Roof Rack
- » Stereo

Body Style  
**SUV / 4x4**

Odometer  
**160,313 km**

Engine  
**4000 cc, V6**

Fuel Type  
**Petrol**


Transmission  
**Automatic, 4WD**

Wheels  
-

VIN  
**SALLAJA435A325619**

Interior  
**Black**

Safety



Based on 2025 VSRR rating

Reg No.  
**JQN162**

Ext Colour  
**Silver**

History  
-

Seats  
**7 seats**

CO2 Emissions  
☆☆☆☆☆☆  
**401 grams/km**

Energy Economy  
☆☆☆☆☆☆  
**Annual fuel cost of \$6,550**  
**16.7L per 100km**

Cost per year is an estimate based on petrol price of \$2.80 per litre and an average distance of 14000 km. Emissions and Energy Economy figures standardised to 3P WLTP.

**Stock ID: 4788**



Mitchell Motor Court | Phone 03 453 0011 | Email mitchellmc@xtra.co.nz  
299 Kaikorai Valley Road, Dunedin 9011, New Zealand  
www.mitchellmotorcourt.co.nz