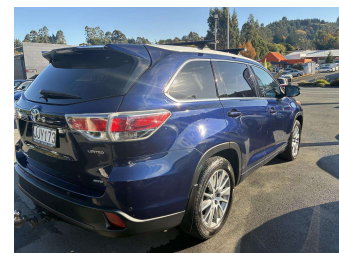



2015 Toyota Highlander LIMITED 3.5P/4WD/6AT



Purchase Price **\$25,995**
Includes GST, Registration & Licensing

Finance may be available on this vehicle. Ask one of our friendly staff for more information.



Gain peace of mind with Mechanical Breakdown Insurance. **Ask us how.**



- Top features**
- » 7 Seater
 - » ABS Braking
 - » Air Bag(s)
 - » Air Con
 - » Air Conditioning
 - » Alloys
 - » Bluetooth
 - » Car Stereo
 - » Central Locking
 - » Central Locking
 - » Child seat anchor poin...
 - » Climate Control
 - » Cruise Control
 - » Digital Display
 - » EFI
 - » Electric Mirrors
 - » Electric Mirrors
 - » Electric Seats

Body Style
4 door, SUV / 4x4

Odometer
163,469 km

Engine
3500 cc, V6

Fuel Type
Petrol

Transmission
Automatic, 4WD

Wheels
-

VIN
5TDDK3FH70S195294

Interior
Black

Safety



Based on 2025 UCSR rating for 13-20 models

Reg No.
JJY173

Ext Colour
Blue

History
-

Seats
7 seats

CO2 Emissions
★☆☆☆☆
283 grams/km

Energy Economy
★☆☆☆☆

Annual fuel cost of \$4,630
11.8L per 100km

Cost per year is an estimate based on petrol price of \$2.80 per litre and an average distance of 14000 km. Emissions and Energy Economy figures standardised to 3P WLTP.

Stock ID: 4707



Mitchell Motor Court | Phone 03 453 0011 | Email mitchellmc@xtra.co.nz
299 Kaikorai Valley Road, Dunedin 9011, New Zealand
www.mitchellmotorcourt.co.nz